



UK MIRROR CLASS ASSOCIATION (UK MCA) UK Mirror National Championships

15th – 21st August 2015

Sailing Instructions

1. RRSS

The regatta will be governed by the RRSs as defined in *The Racing RRSs of Sailing (RRS) 2013 - 2016*.

The following prescriptions of the RYA will not apply:

Boats participating in this regatta shall conform to the Equipment RRSs of Sailing (ERS) 2013 - 2016, the Class RRSs of the International Mirror Class, this Notice of Race, and the Sailing Instructions.

Racing RRS(s) will be changed as follows: 40 – no requirement to fly flag Y. The changes will appear in full in the sailing instructions. The sailing instructions may also change other racing RRSs.

The Exoneration Penalty (with the minimum penalty increased from two to three places) and the Advisory Hearing and RYA Arbitration of the RYA RRSs Disputes Procedures will be available. This procedure can be obtained on the RYA web site. (www.rya.orh.uk/general/RRSsdisputes).

Under RRS 87, RRS 9.2 of the International Mirror class RRSs is changed for this regatta to allow cameras and electronic tracking devices provided by the organising authority.

NOTICES TO COMPETITORS

1. Notices to competitors will be posted on the official notice board located on the middle deck of the club outside the main office window

2. CHANGES TO SAILING INSTRUCTIONS

1. Any change to the sailing instructions will be posted before 09:00 on the day it will take effect, except that any change to the schedule of races will be posted by 2000 on the day before it will take effect.

3. SIGNALS MADE ASHORE

Signals made ashore will be displayed from the club mast.

When flag AP is displayed ashore, '1 minute' is replaced with 'not less than 30 minutes' in the race signal AP.

When the class flag is raised accompanied by one sound signal, competitors may tally off.

When the class flag is subsequently lowered accompanied by one sound signal, competitors are allowed to leave the beach and sail to race area.

RRS 40 applies at all times while afloat. This changes the Part 4 preamble. The display of code flag Y is not required

Schedule

Twelve races are scheduled. Four races shall be completed to constitute a valid Championship. Additional races may be sailed on any day at the discretion of the Race Committee to achieve the schedule. No warning signal will be made after 14:00 on Friday 21st August.

Date	Programme	Times
Saturday 15 th August	Registration & Equipment Inspection	14:00 to 18:00
Sunday 16 th August	Registration & Equipment Inspection Competitor Briefing Safety Briefing Practice Race	10:00 to 12:30 12:00 12:15 Warning signal 13:55
Monday 17 th August	Races 1 & 2	First warning signal 10:55
Tuesday 18 th August	Races 3, 4 & 5	First warning signal 10:55
Wednesday 19 th August	Races 6 & 7 All-in Race with Mirror Week Fleet	First warning signal 10:55 Warning signal TBC
Thursday 20 th August	Races 8, 9 & 10	First warning signal 10:55
Friday 21 st August	Races 11 & 12	First warning signal 10:55

The Warning signal will be the numeral 6 pennant. The Race Committee may bring forward a race or races but there will no more than 4 races per day. Any change to the sailing instructions will be posted two hours before the start of the race(s) affected, except that any change to the schedule or races will be made before 20:00 on the preceding day.

1. To alert boats that a race or sequence of races will begin soon, the orange starting line flag will be displayed with one sound at least five minutes before a warning signal is made.

2. On the last day of the regatta the Friday 21st August 2015, no warning signal will be made after 14:00.

4. CLASS FLAGS

1. Class flags will be: Red flag with black Mirror insignia

5. RACING AREAS

The sailing area will be in Tremadoc Bay, Admiralty Chart 1971, and approximately 2 N.M. east of South Caernarvonshire Yacht Club.

The courses will be either a Triangle/Sausage or Trapezoid.

6. THE COURSES

1. The diagrams in Attachment A show the courses, including the approximate angles between legs, the order in which marks are to be passed, and the side on which each mark is to be left.
2. Course signals will be displayed on a board on the committee boat.
3. No later than the warning signal, the committee boat will display the approximate compass bearing of the first leg.

7. MARKS

Marks 1, 2, 3 and 4 will be inflatable orange cylindrical buoys.

New marks, as provided in instruction 12.1, will be black triangular pyramids.

The starting line will be between either the masts of two committee boats flying orange flags or the mast of a committee boat flying an orange mast and a cylindrical inflatable buoy. More detail about the start mark in the competitors briefing.

The finish line will be between the mast displaying an orange flag on the committee and a smaller cylindrical inflatable buoy.

A race committee boat signalling a change of a leg of the course is a mark as provided in instruction 12.2.

8. AREAS THAT ARE OBSTRUCTIONS

The following areas are designated as obstructions:

The triangle formed between Carreg-y-Trai buoy and St Tudwals Island East.

Inside the beacon marking the disused surface water drainage outfall which is 3 cables N.E. of the SCYC Clubhouse.

Inside the beacon marking the end of the SCYC slipway.

Any boat found entering any of the above areas may be disqualified from race(s) held on that day.

9. THE START

Races will be started by using RRS 26 with the warning signal made 5 minutes before the starting signal.

The starting line will be either between the masts of two committee boats flying orange flags or the mast of a committee boat flying an orange mast and a cylindrical inflatable buoy. More detail about the start mark in the competitors briefing.

Boats whose warning signal has not been made shall avoid the starting area during the starting sequence for other races.

A boat starting later than 5 minutes after her starting signal will be scored Did Not Start without a hearing. This changes RRS A4 and A5.

10. CHANGE OF THE NEXT LEG OF THE COURSE

To change the next leg of the course, the race committee will lay a new mark (or move the finishing line) and remove the original mark as soon as practicable. When in a subsequent change a new mark is replaced, it will be replaced by an original mark.

Except at a gate, boats shall pass between the race committee boat signalling the change of the next leg and the nearby mark, leaving the mark to port and the race committee boat to starboard. This changes RRS 28.

11. THE FINISH

The finish line will be between the mast displaying an orange flag on the committee and a smaller cylindrical inflatable buoy.

When Courses 1, 2 or 3 are shortened at the leeward mark or gate a race committee boat will display flag F in the vicinity of the leeward mark or gate whilst making repetitive sound signals. Boats should leave mark 3 to port and sail directly to the finishing line, which will be signalled by a Finishing Vessel displaying flag S. The finishing line will be between the mast of the Finishing Vessel displaying an orange flag and the finishing mark, this adds to RRS 32.2.

Illustration of Shorten Course at Leeward Mark or Gate



After the first boat has finished, the race committee may set alternative finishing lines as follows:

1. When a committee boat displays flag W with two sound signals, boats that have not yet rounded the nearby mark shall finish between this mark and the staff on the boat displaying flag W.
2. When flag W is displayed near a mark that ends multiple legs of the course, separate finish lines exist and separate finishing orders will be recorded for each of these lines.
3. When a boat finished in accordance with this instruction, she shall be awarded a finishing place after all boats that have passed the nearby mark ahead of before flag W was displayed.
4. Boats that have passed the mark before flag W is displayed, and have not retired from the race, but subsequently fail to finish, shall be awarded the average of the points for places available to them had they finished. This changes RRS 44.2.
5. The times specified in SI 15 will apply also at every flag W finish line defined by SI 13.2.

12. PENALTY SYSTEM

RRS 44.1 and RRS 42.1 are changed so that only one turn, including one tack and one gybe, is required.

Appendix P will apply, except as changed by SI 14.1 and 14.3

Appendix P2.3 is deleted, P2.2 is changed to apply to the second and each subsequent penalty of a boat.

13. TIME LIMITS AND TARGET TIMES

Time limits and target times are as follows:

	Time Limit	Target Time
Mark 1	30mins	10mins

Race Time	90mins	45mins
-----------	--------	--------

If no boat has passed Mark 1 within the Mark 1 time limit the race will be abandoned. Failure to meet the target time will not be grounds for redress. This changes RRS 62.1(a).

Boats failing to finish within 15mins after the first boat sails the course and finishes will be scored Did Not Finish without a hearing. This changes RRS 35, A4 and A5.

14. PROTESTS AND REQUESTS FOR REDRESS

Protest forms are available at the race office, located on the middle deck of the Yacht Club. Protests and requests for redress or reopening shall be delivered there within the appropriate time limit.

The protest time limit is 90 minutes after the last boat has finished the last race of the day or the race committee signals no more racing today, whichever is later.

Notices will be posted no later than 30 minutes after the protest time limit to inform competitors of hearings in which they are parties or named as witnesses. Location and time of hearings will be posted with the notification.

Notices of protests by the race committee or protest committee will be posted to inform boats under RRS 61.1(b).

A list of boats that, under instruction 14.2, have been penalized for breaking RRS 42 will be posted.

Breaches of instructions 11.3, 18, 21, 23, 24, 25, 26 and 27 will not be grounds for a protest by a boat. This changes RRS 60.1(a). Penalties for these breaches may be less than disqualification if the protest committee so decides.

On the last scheduled day of racing a request for reopening a hearing shall be delivered

- (a) Within the protest time limit if the requesting party was informed of the decision on the previous day;
- (b) No later than 30 minutes after the requesting party was informed of the decision on that day.

This changes RRS 66.

On the last scheduled day of racing a request for redress based on a protest committee decision shall be delivered no later than 30 minutes after the decision was posted. This changes RRS 62.2.

Decisions of the international jury will be final as provided in RRS 70.5.

15. SCORING

A total of 4 races are required to be completed to constitute a championship.

The Low Point Scoring System of Appendix A 4.1 of the RRS will apply.

When fewer than 5 races have been completed, a boat's series score will be the total of her race scores.

When from 5 to 7 races have been completed, a boat's series score will be the total of her race scores, excluding her worst score.

When 8 or more races have been completed, a boat's series score will be the total of her race scores excluding her two worst scores.

Overall results will be published including details of fleet positions.

Fleet prizes will be awarded on the basis of 17.1 to 17.5 above.

16. SAFETY REGULATIONS

Competitors shall wear a personal floatation device at all times while afloat, except briefly while adjusting clothing. Flag Y will be displayed. This changes RRS 40.

Checking-out and check-in. The requirements of this instruction are specified for the safety of competitors.

1. The tally control point to check-out and check-in competitors will be located on the beach.
2. Tallies comprise numbered rubber wristbands. Numbers will be allocated at registration, and posted on the official notice board. Tallies shall be worn visibly, over clothing, on the right wrist by either helm or crew at all times whilst afloat.
3. Either the helm or the crew shall check-in immediately on returning to shore after racing, but no later than the protest time limit, by returning the tally to the beachmaster.
4. The penalty for failure to comply with this instruction will be 5 points added to the boat's series score for each infringement without a hearing. A list of boats that have infringed will be posted on the official notice board within 20minutes after the protest time limit. This changes RRS A5.

A boat that retires from a race shall notify the race committee as soon as possible.

Boats wishing to sail ashore before the end of the day's racing shall not do so unless authorised by a safety boat. The safety boat will instruct boats in the procedure to returning to shore.

17. REPLACEMENT OF CREW OR EQUIPMENT

Substitution of competitors will not be allowed without prior written approval of the race committee.

Substitution of damaged or lost equipment will not be allowed unless authorized by the race committee. Requests for substitution shall be made to the committee at the first reasonable opportunity.

18. EQUIPMENT AND MEASUREMENT CHECKS

Each boat competing in Gold or Silver fleet shall produce a valid Measurement Certificate before racing commences. All sails shall be inspected and their certification mark validated. Boats may be measured or tested at the discretion of the Measurer. Following each day's racing one or more boats may be inspected for compliance with the Class Rules.

19. EVENT ADVERTISING

Boats shall display event advertising supplied by the organizing authority as follows:
<Insert necessary information about supplied advertising material>.

20. OFFICIAL BOATS

Official boats may be marked with brightly coloured yellow flags.

21. SUPPORT BOATS

Team leaders, coaches and other support personnel shall stay at least 150m outside areas where boats are racing from the time of the preparatory signal until all boats have finished or retired or the race committee signals a postponement, general recall or abandonment.

Support boats shall be marked with brightly coloured yellow flags.

22. TRASH DISPOSAL

As sailors, we seek to protect and restore our oceans and coastal waters. Boats shall not intentionally put trash in the water. Trash may be placed aboard support and race committee boats. The penalty for breaking RRS 55 is at the discretion of the protest committee (DPI) and may be less than disqualification.

23. RADIO COMMUNICATION

Except in an emergency, a boat shall neither make radio transmissions while racing nor receive radio communications not available to all boats. This restriction also applies to mobile telephones.

24. PRIZES

Prizes will be given as listed in the Notice of Race.

25. DISCLAIMER OF LIABILITY

1. RRS 4 of the Racing Rules of Sailing states: "The responsibility for a boat's decision to participate in a race or to continue racing is hers alone."
 - a) Sailing is by its nature an unpredictable sport and therefore inherently involves an element of risk. By taking part in the event, each competitor agrees and acknowledges that:
 - b) They are aware of the inherent element of risk involved in the sport and accept responsibility for the exposure of themselves, their crew and their boat to such inherent risk whilst taking part in the event;
 - c) They are responsible for the safety of themselves, their crew, their boat and their other property whether afloat or ashore;
 - d) They accept responsibility for any injury, damage or loss to the extent caused by their own actions or omission;
 - e) Their boat is in good order, equipped to sail in the event and they are fit to participate;
 - f) The provision of a race management team, patrol boats and other officials and volunteers by the event organiser does not relieve them of their own responsibilities;
 - g) The provision of patrol boat cover is limited to such assistance, particularly

INSURANCE

2. Each participating boat shall be insured with valid third-party liability insurance with a minimum cover of £2 million per incident or the equivalent.

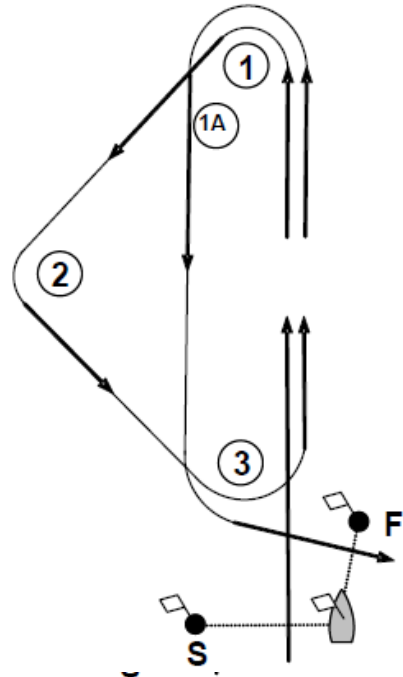
Appendix A

Course 1

Start – 1 – 2 – 3 – 1 – 1A – 3 = 1 round. Continue until the – Finish

Internal angles of triangle = Approx 60°

All marks to be passed to Port

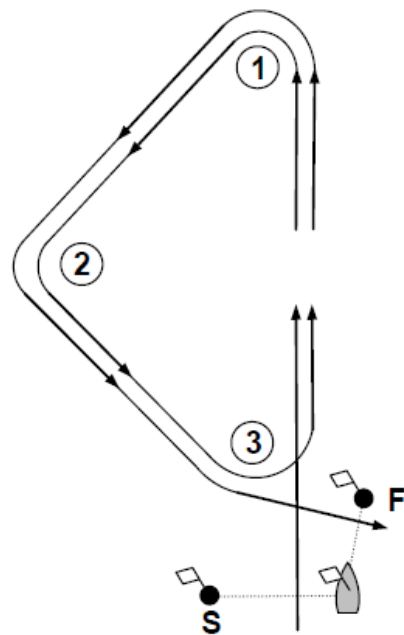


Course 2

Start – 1 – 2 – 3 = 1 round. Continue until – Finish

Internal angles of triangle = Approx 60°

All marks to be passed to Port

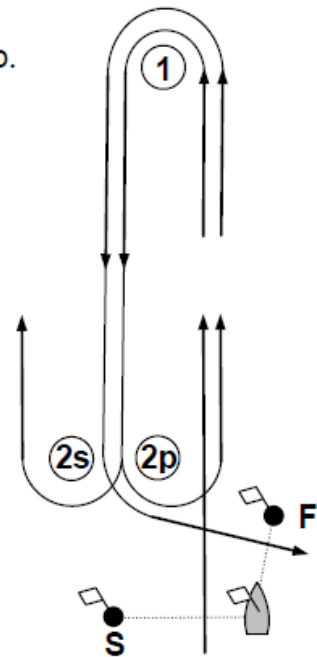


Course 3 “Windward-Leeward”

Start – 1p – 2s (or 2p). = 1 round. Continue until Finish with 2p.

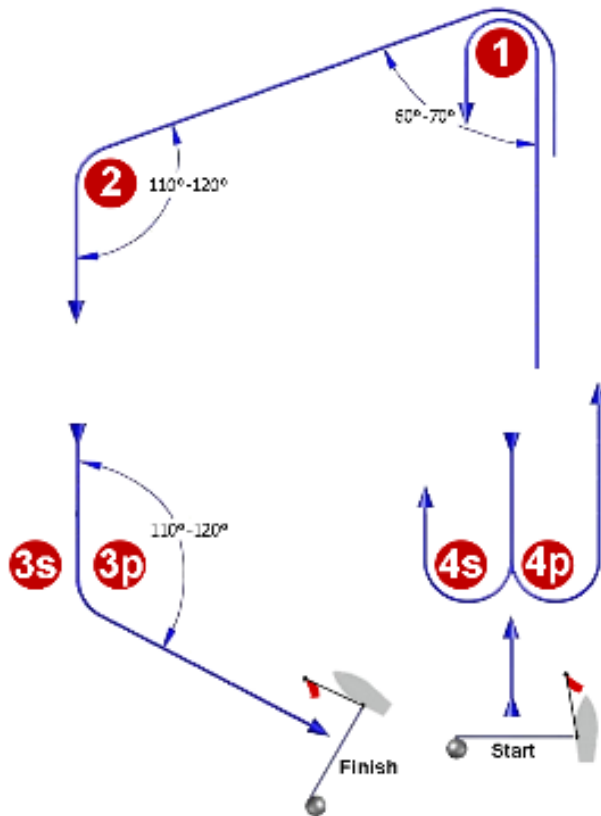
Mark 1 to be passed to Port

Mark 2s (left to starboard) and 2p (left to Port)



Course 4a: Gold Fleet Trapezoid

I

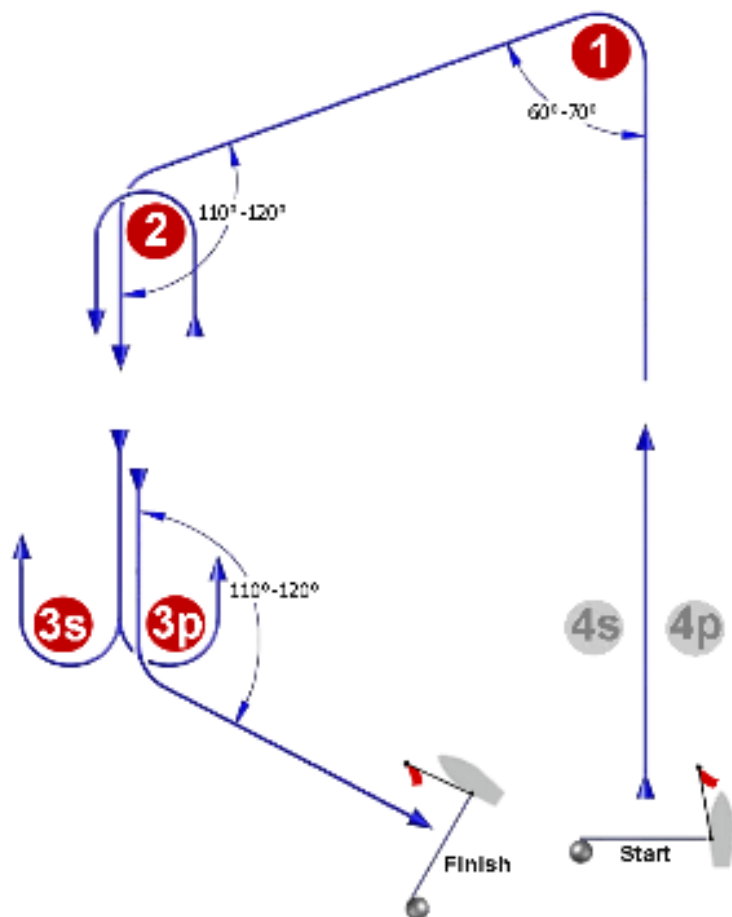


Course: Inner Trapezoid

Signal	Marking Rounding Order
I2	Start - 1 - 4s/4p - 1 - 2 - 3p - Finish
I3	Start - 1 - 4s/4p - 1 - 4s/4p - 1 - 2
	- 3p - Finish
I4	Start - 1 - 4s/4p - 1 - 4s/4p - 1 - 4s/4p
	- 1 - 2 - 3p - Finish

Course 4b: Silver Fleet Trapezoid

0



Course: Outer Trapezoid

Signal	Marking Rounding Order
02	Start - 1 - 2 - 3s/3p - 2 - 3p - Finish
03	Start - 1 - 2 - 3s/3p - 2 - 3s/3p - 2 - 3p - Finish
04	Start - 1 - 2 - 3s/3p - 2 - 3s/3p - 2 - 3s/3p - 2 - 3p - Finish